

USB Driver Setup Guide

HI-202E

USB GPS Receiver



A. INTRODUCTION OF GPS USB DRIVER FILES	1
B. WINDOWS 98 INTERFACE	3
1. Install GPS USB Driver	3
2. Check Enable COM Port Number	6
3. Remove GPS USB Driver	10
C. WINDOWS XP INTERFACE	11
1. Install GPS USB Driver	11
2. Check Enable COM Port Number	14
3. Remove GPS USB Driver	17
D. CHANGE COM PORT NUMBER APPLICATION PROGRAM	18
E. IMPORTANT REMARK	20

A. Introduction of GPS USB Driver Files

The GPS USB driver group consists of 6 files.

Files Name	Description of Specific Property
DRemover98_2K.exe	Type: Application This execution file removes GPS USB driver from the PC.
Serwpl.inf	Type: Setup Information This file provides major setup information.
Win2K\ser2pl.sys	Type: System File This file provides Windows 2000 and Windows XP hardware specific interface.
Win98_ME\ser9pl.sys	Type: System File This file provides Windows 98 and Windows Millennium hardware specific interface.
Win98_ME\serspl.inf	Type: Setup Information This file provides Windows 98 and Windows Millennium setup information
Win98_ME\serspl.vxd	Type: Virtual Device Driver This file is virtual device driver.

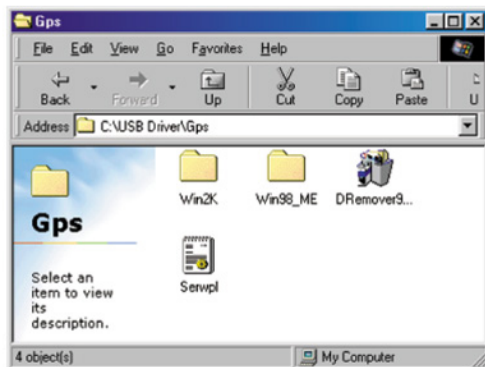


Figure 1: Screen of GPS USB Driver Group

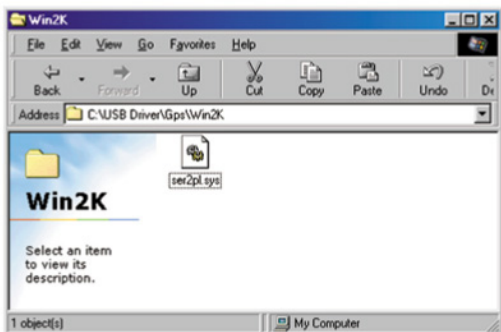


Figure 2: Screen of GPS USB Driver Win 2000 and Win XP System File

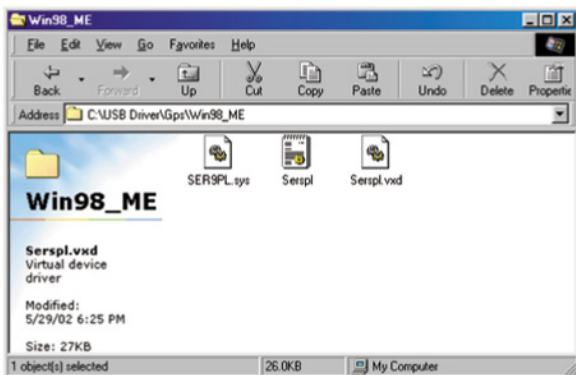


Figure 3: Screen of GPS USB Driver Win 98 and Win ME Group

B.Windows 98 Interface

1.Install GPS USB Driver

Before the installation of GPS USB driver, there are three procedures required.

The first thing is to turn on PC in the Windows environment. The second thing is to copy USB driver into HDD. The third thing is to plug the GPS receiver into the USB port of PC and then follow the installation guide.

Step 1: Click the "Next" button

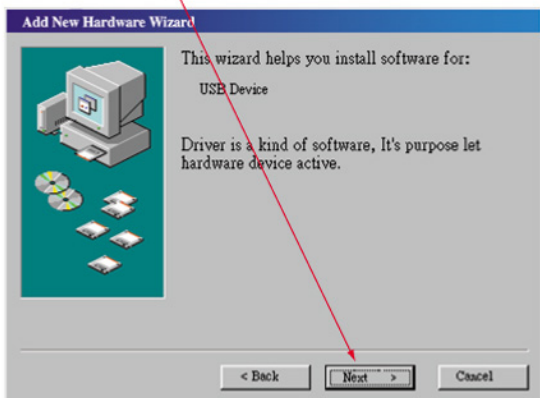


Figure 4: Win 98 Automatic Installation Driver Screen



Step 2: Select "Automatically" and click the "Next" button

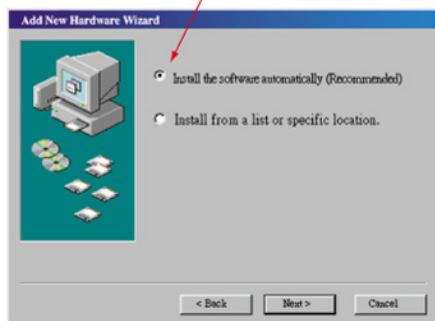


Figure 5: Win 98 Automatic Installation Driver Screen

Step 3: Specific driver location and click the "Next" button

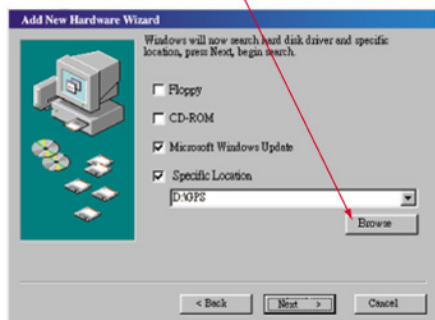


Figure 6: Win 98 Automatic Installation Driver Screen

Step 4: Click the "Next" button

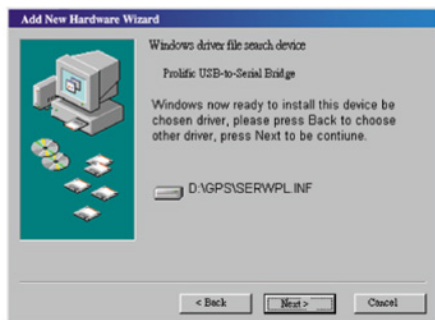


Figure 7: Win 98 Automatic Installation Driver Screen

Step 5: Click the "Finish" button

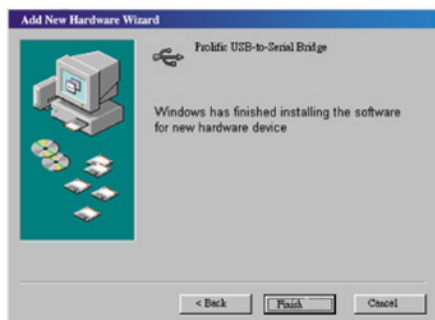


Figure 8: Win 98 Automatic Installation Driver Screen



2. Check Enable COM Port Number

After you install GPS USB driver, you should know which COM port is available, and check enabled COM port number.

You need to know the COM port assignment for the GPS receiver, when configuring map or chart software. Please notice that this remark is very important; if not configured properly, the mapping software will not communicate with the GPS receiver.

To check your assigned COM port for the GPS receiver, please follow the instructions below.

Step 1: Check enabled COM port number by double-clicking the icon show in Figure-9, and then a dialog window shown in Figure-10 will be pop up.



My Computer

Figure 9: My Computer Icon

Step 2: Double-click the "Control Panel" icon

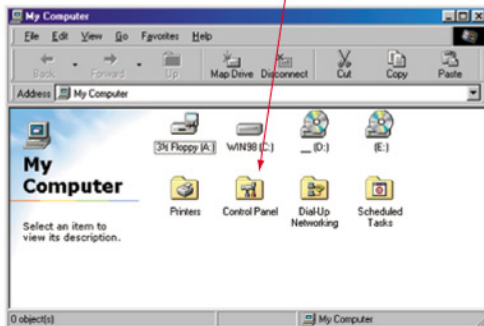


Figure 10: My Computer Screen

Step 3: Double-click the "System" icon

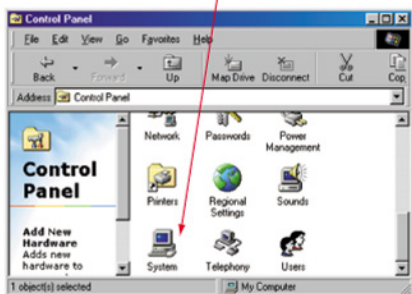


Figure 11: Control Panel Screen



Step 4:

Press "Device Manager" button

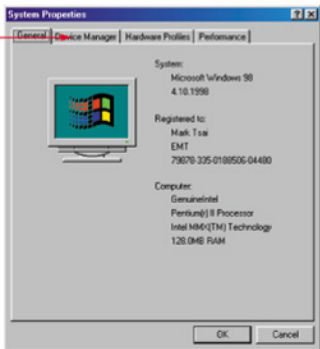


Figure 12: System Properties Screen

Step 5:

Select "USB to Serial Port"
(COM3) and click
"Properties" button

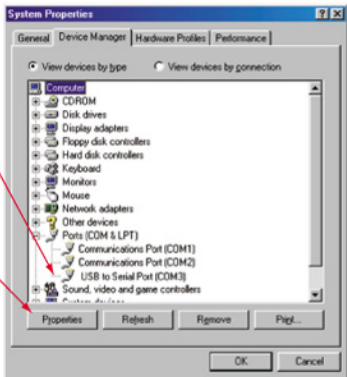


Figure 13:
System Properties Screen

Step 6: Browse COM3 properties



Figure 14: System Properties Screen



3.Remove GPS USB Driver

If you want to update the USB driver, you should remove existing driver and install new one.

Step 1: Remove GPS USB driver by double-clicking the icon show in Figure-15. A dialog window shown in Figure-16 will be pop up.



Figure 15: GPS USB Driver Remove Icon

Step 2: Click "OK" button

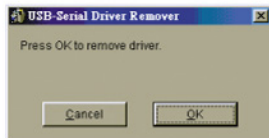


Figure 16: Remove Driver Screen

Step 3: Click "Yes"

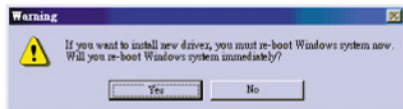


Figure 17: Driver Remove Warning Screen

C.Windows XP Interface

1. Install GPS USB Driver

Before the installation of GPS USB driver, there are three procedures required.

The first thing is to turn on PC in the Windows environment. The second thing is to copy USB driver into HDD. The third thing is to plug the GPS receiver into the USB port of PC and then follow the installation guide.

Step 1: Select "Install from a list or specific location (Advanced)"



Figure 18: Win XP Automatic Installation Driver Screen



Step 2: Select "Include this location in the search" OR "Browse" to specific GPS USB driver location

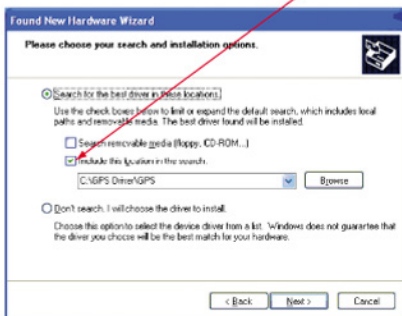


Figure 19: Win XP Automatic Installation Driver Screen

Step 3: Click "Continue Anyway" button



Figure 20: Win XP Automatic Installation Driver Screen

Step 4: Finish screen



Figure 21: Win XP Automatic Installation Driver Screen

Step 3: Click "Continue Anyway" button



Figure 11: Win XP Automatic Installation Driver Screen



2. Check Enable COM Port Number

After you install GPS USB driver, you should know which COM port is available, and check enabled COM port number.

You need to know the COM port assignment for the GPS receiver, when configuring map or chart software. Please notice that this remark is very important; if not configured properly, the mapping software will not communicate with the GPS receiver.

TO check your assigned COM port for the GPS receiver, please follow the instructions below.

Step 1: Check enabled COM port number by clicking "Start" → clicking "Control Panel" → double-clicking "System" icon

Step 2: Select "Hardware"

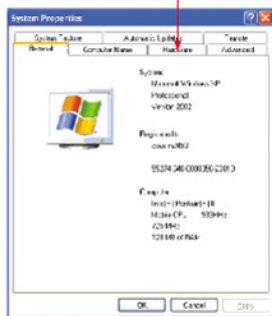


Figure 22: System Properties Screen

Step 3: Select "Device Manager"

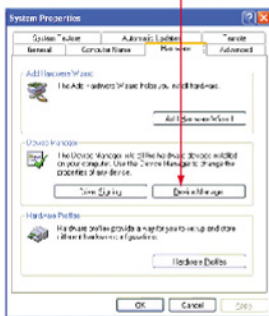


Figure 23: System Properties Screen

Step 4: Select Ports (COM&LPT)

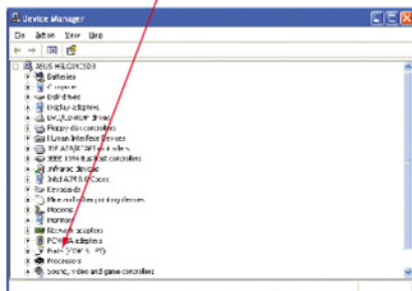


Figure 24: Device Manager Screen

Step 5: Select COM4

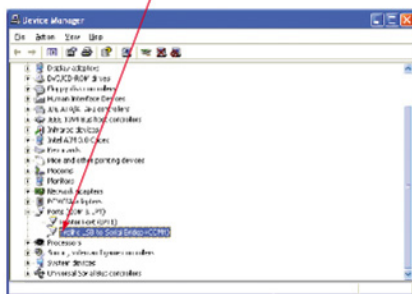


Figure 25: Device Manager Screen



Step 6: Select "Driver"



Figure 26:
USB-to-Serial Bridge Screen

Step 7: Browse COM4 properties



Figure 27:
USB-to-Serial Bridge Properties
Screen

3 Remove GPS USB Driver

If you want to update the USB driver, you should remove existing driver and install new one.

Step 1: Remove GPS USB driver by double-clicking the icon show in Figure-19. A dialog window shown in Figure-20 will be pop up.



Figure 28: GPS USB Driver remove icon

Step 2: Click "OK" button

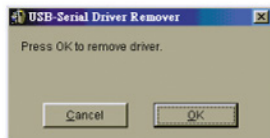


Figure 29: Remove Driver Screen

Step 3: Click "Yes" button

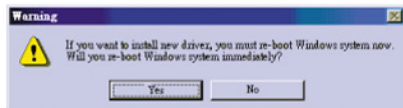


Figure 30: Driver Remove Warning Screen



D.Change COM Port Number Application Program

If the notebook assigns COM number to COM5, then can to execute SetCOM.exe for COM number change.

Step 1:

For change COM port number assign by double-clicking the icon show in Figure-31, and then small icon shown in Figure-33 will be pop up.



SetCOM.exe

Figure 31: SetCOM.exe Icon



Figure 32: Start bar on the right-below corner of screen



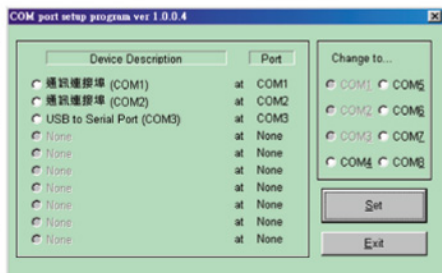
Figure 33: Start bar on the right-below corner of screen

Step 2:

by clicking the icon show in Figure-33. a dialog window shown in Figure-34 will be pop up.

Figure 34:

COM port number change screenc

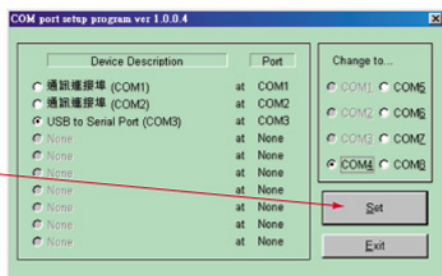


Step 3:

for example change COM3 become COM4, first Click COM3 and COM4 then Click "Set" button

Figure 35:

COM port number change screenc

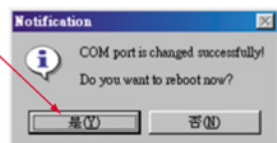


Step 4:

Click "Yes" button

Figure 36:

Notification Screen



Step 5: To check enable COM port number



E. Important Remarks

1. If your system is Windows Millennium, please refer to Windows 98 installation guide. If your system is Windows 2000, please refer to Windows XP installation guide.
2. If you follow the steps but the GPS receiver doesn't work, please try to unplug the GPS receiver from the USB port, wait for 5~8 seconds, and re-plug the GPS receiver into your PC.
3. Occasionally the mouse cursor does not work properly when you run the Win2000 and Win XP, and this situation is owing to Win2000 and Win XP operating system instead of the GPS receiver. Microsoft announces that this situation is "the serial device may be detected as a serial mouse in Win2000 and Win XP".
4. If your GPS receiver is recognized as a Microsoft serial mouse, there are two ways and you can choose either one to solve the problem. The first is to unplug the GPS receiver from PC, wait for 5~8 seconds, and re-plug the GPS receiver into your PC. The second is to disable this serial mouse; you can follow the step-by-step instructions below.

Click "start" → click "Control Panel" → double-click "system" icon → click "Hardware" → click "Device Manager" → click "Mouse" → select the wrong mouse → click your real mouse right button → disable the wrong mouse.

Should you have any additional question regarding the operation of Ever More USB GPS receiver, please feel free to contact your correspondent sales representative. It is important that you record what problems you encounter and what error messages occur at that point, so that the technical support people can detect your problems more efficiently.



GPS Receiver

